



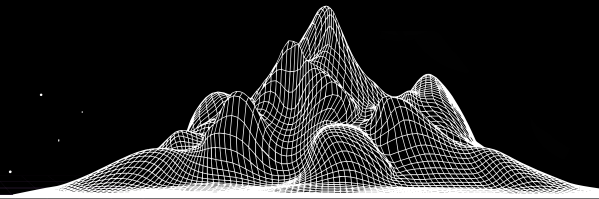
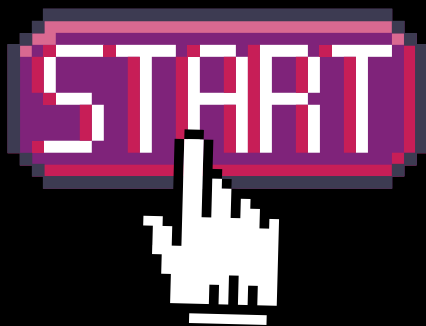
CHAINCADE

"PLAY TO WIN" ARCADE ECOSYSTEM

Using an innovative combination of blockchain, mobile apps, and NFTs, our "Play to Win" ecosystem provides a robust platform for players and creators alike. Open for everyone, with sustainable prizes, and most importantly, **FUN AND REWARDING!**

OVERVIEW

1. Play Games, Earn Tickets
2. Hold more ChainCade to play more & earn more
3. Trade in tickets for a prize box
4. Unlock NFTs, crypto, or other prizes
5. Complete NFT "Sets" to trade in for bigger prizes
6. Browse the ChainCade marketplace to complete your collections and trade with others



GETTING STARTED

1. Download your favorite ChainCade game on the Google Play Store



2. Go to Login/Sign Up

3. Create Your ChainCade account and connect your BSC wallet

4. Sign with your wallet to verify (No cost)

5. Head back to the game, and Welcome to the Retroverse!



BOXES & PRIZES

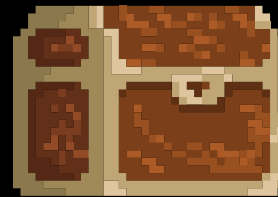
Prize Boxes

Prize Boxes contain the most valuable, coveted, and rare prizes in the arcade. From limited time events and one-of-a-kind prizes, the chance to win big has never been better!



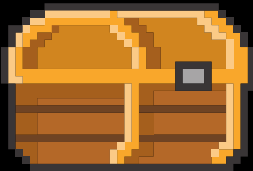
Each prize box is fully on-chain randomized and guaranteed to have a valuable prize inside including possibly (but not limited to):

- Arcade Edition & other ChainCade NFTs
- Cryptocurrency
- Exclusive Partnership NFTs
- Much, Much More!



Future boxes may include:

- Digital gift card codes
- Valuable memberships & subscriptions
- Vacation packages



Opening Boxes

Opening a box will require 500 Tickets that can be won by playing any ChainCade arcade game. Opening boxes will also cost "Energy Points", which are based on your ChainCade token holdings, and explained on the following page.

ENERGY

Energy is your fuel for winning in the arcade, and is determined by the amount CHAINCADE you hold.

Energy Formula:

S = Circulating supply [total - burned]

C = ChainCade held

EP = Energy Points

$(C/S) * 10000000 = EP$ [anything less than 1 is rounded up to 1]

Earning tickets and opening any boxes will use up your energy for the day, until it resets at 00:00 UTC.

Earning tickets will always cost 1 energy point. Players can continue playing without energy, but will not earn tickets.

The first box you open each day will cost 1 energy point. The second box in the same day will cost 10 energy points. The third box will cost 20 energy points. Further boxes will cost 2x until reset along with energy points at 00:00 UTC

EXAMPLES



IF S=500T

- | | |
|---------------------|-----------------------|
| • 500M CC=10EP/DAY | • EARN 1 TICKET=1EP |
| • 1B CC=20EP/DAY | • FIRST BOX/DAY=1EP |
| • 5B CC=100EP/DAY | • SECOND BOX/DAY=10EP |
| • 10B CC=200EP/DAY | • THIRD BOX/DAY=20EP |
| • 25B CC=500EP/DAY | • FOURTH BOX/DAY=40EP |
| • 50B CC=1000EP/DAY | • FIFTH BOX/DAY=80EP |
| | • ECT... |

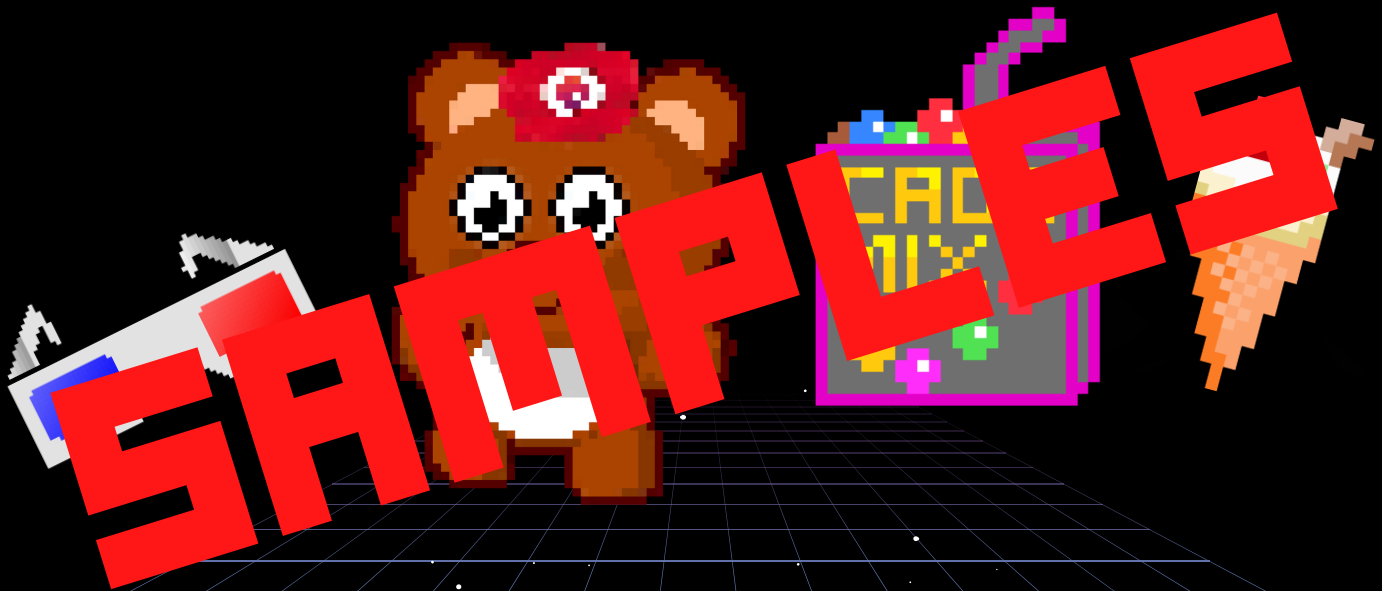


ARCADE EDITION NFTS

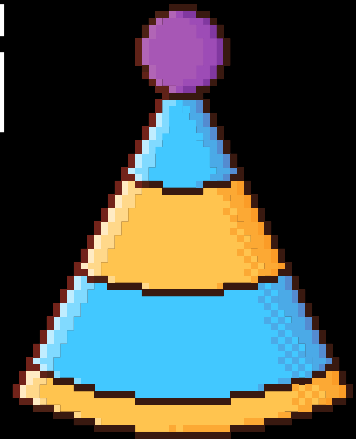
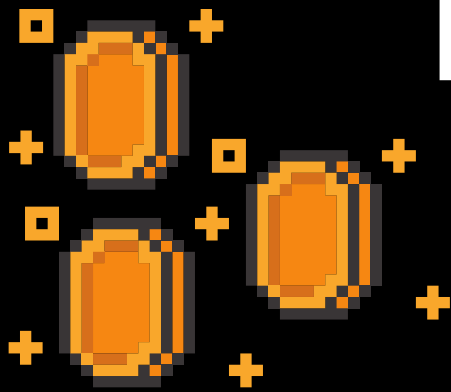
Arcade prize themed NFTs, just like we used to win! Some rare versions may give you a boost in certain games if you're holding it, and they'll all have a purpose in Phase 3 in your personal arcade!

Certain NFTs may even be part of a "set" you can trade in for an even bigger prize!

Every 10 days a new round of NFTs will be added to the prize pool. Any that are not won, are burned forever! Collect them while they're out!

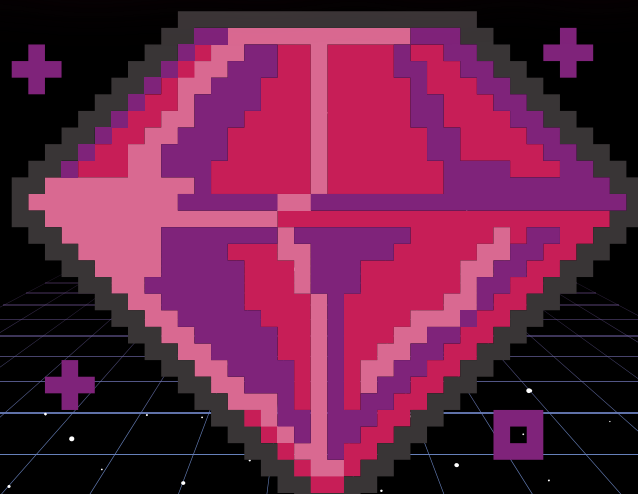


PLAY TO WIN LAUNCH PARTY PRIZES



To celebrate the launch of the next phase of ChainCade, a certain number of "Arcade Edition" NFTs will have a special 'Stamp' to mark it as a "Launch Party Prize". Collect one of each type of stamped "Launch Party Prize" NFT to complete the set to win

\$25,000.00



PHASE 3

Phase 3 will incorporate a further use-case to the "Arcade Edition" NFTs, integrating them into building your own custom Arcade/Lounge in the Retroverse! Build your arcade to passively farm Tickets & NFTs!

"Arcade Managers" will be able to upgrade their Arcade's in game and real-life earning potential, by using rare collectables to fully deck out and power up their arcade!

Players without an arcade yet, can play in any arcade they want! The more people that play in your arcade, the more you earn!

Only players with either a Founders Edition NFT, ChainCader NFT, or 1T Chaincade holdings can open an arcade in the retroverse, but anyone can get there through playing and winning!

MORE INFO AVAILABLE
AFTER PHASE 2



PHASE 2
COMING SOON

CHAINCADE.COM

Rules and Terms available at ChainCade.com